

THE INFORMATION CONTAINED IN THIS DRAWING IS THE SOLE PROPERTY OF ANDERSON POWER PRODUCTS. ANY REPRODUCTION IN PART OR WHOLE WITHOUT THE WRITTEN PERMISSION OF ANDERSON POWER PRODUCTS IS PROHIBITED.

Copyright 2001

ANDERSON POWER PRODUCTS RESERVES THE RIGHT TO ALTER PRODUCT TYPES, THEIR TECHNICAL DATA, DIMENSION, STYLE AND ACCESSORIES WITHOUT PRIOR NOTIFICATION.

D

C

B

A

D

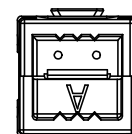
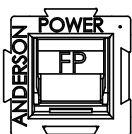
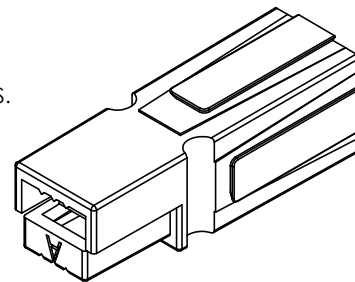
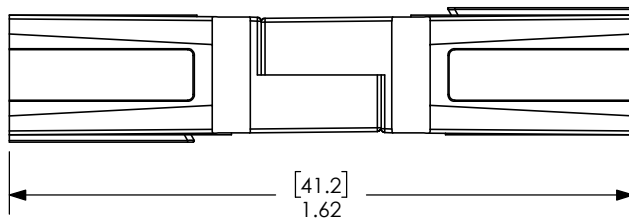
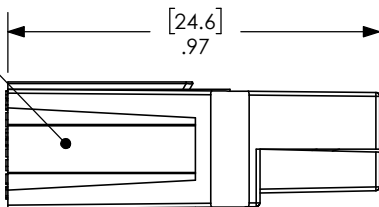
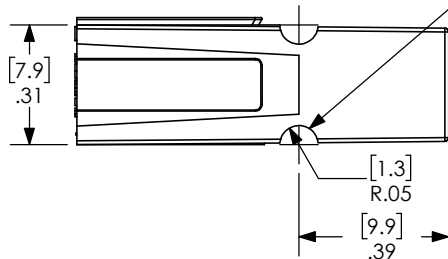
C

B

A

DOVETAILS ALLOW STACKING IN VERTICAL, HORIZONTAL, OR IN BLOCK CONFIGURATIONS.

WHEN MATED SIDE TO SIDE, HALF-ROUNDS ALIGN TO FORM A SLOT FOR ROLL PIN INSERTION, WHICH PROTECTS AGAINST ACCIDENTAL DISLODGING OF MATED HOUSINGS.



NOTES:

1. SPRING/HOUSING ASSEMBLIES ARE UL RECOGNIZED PER FILE E26226.
2. THESE HOUSING ASSEMBLIES ACCOMMODATE ANDERSON CONTACTS FOR WIRE RANGES FROM #20 AWG TO #10 AWG.
3. FOR ASSEMBLY INSTRUCTIONS, SEE DOCUMENT 1S1072.
4. HOUSINGS: POLYCARBONATE, UL94V0.
SPRING: STAINLESS STEEL.
FOR OTHER COLORS, CONSULT ANDERSON POWER PRODUCTS.

CAT. NO.	COLOR
1327FP	RED
1327G5FP	GREEN
1327G6FP	BLACK
1327G7FP	WHITE
1327G8FP	BLUE
1327G16FP	YELLOW
1327G17FP	ORANGE
NOT RELEASED	GRAY
NOT RELEASED	BROWN
NOT RELEASED	PINK
NOT RELEASED	PURPLE

4 8 6 3 5

REVISIONS				DIMENSIONS ARE IN:		APPROVALS		ANDERSON POWER PRODUCTS		
REV.	DESCRIPTION	APPRV	DATE	MM [INCH]	UNLESS OTHERWISE STATED	DRAWN	CHECKED	TITLE		
8	ECN 2016-0079	CPD	9/6/2016		TOLERANCES:	RLE	DJD	POWERPOLE 15/45 HOUSING FINGERPROOF		
7	ECRN-15624		4/24/2014		DECIMALS (INCH) .XX ± .02					
6	ECRN-15089	TWE	3/22/2012		DECIMALS (MM) .X ± .5					
5	ECRN-14815	AMS	1/24/2011		ANGLES ±2°					
4	ECRN-14250	AMS	2/4/2008		SURFACE FINISH:	MFG APPRV	DJM			
3	ECRN-13225	CMS	1/7/2001		MACHINED 3.2µ [128µin]	CHB				
					MOLDED 1.6µ [64µin]	QC APPRV				
					MATERIAL: SEE NOTES	ENG APPRV	UFN	SIZE A	DWG NO. 1-9597S18	REV. 8
					FINISH: AS MOLDED			SCALE NONE	CADFILE 01546	SHEET 1 OF 1



-CAD GENERATED DRAWING-
DO NOT MANUALLY UPDATE
DO NOT SCALE