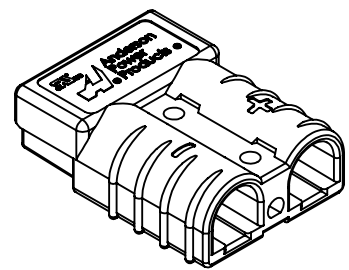
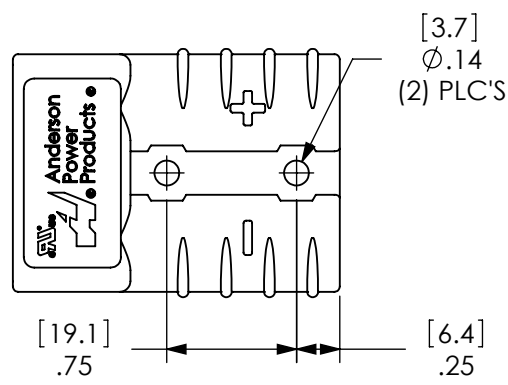


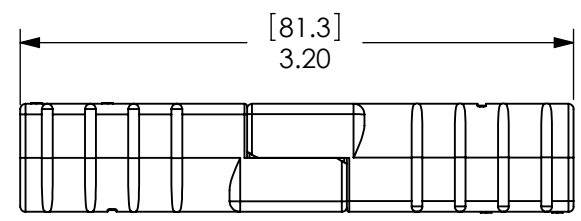
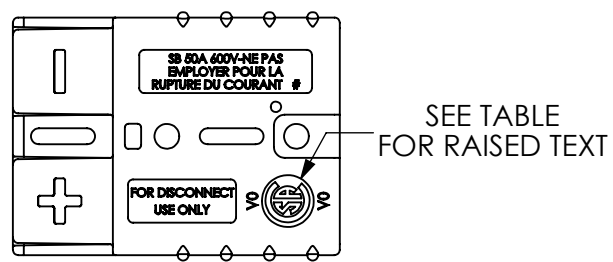
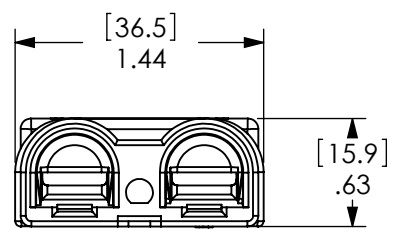
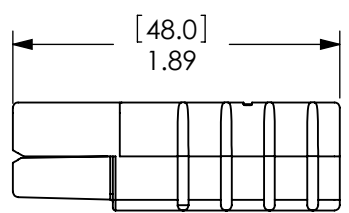
THE INFORMATION CONTAINED IN THIS DRAWING IS THE SOLE PROPERTY OF ANDERSON POWER PRODUCTS. ANY REPRODUCTION IN PART OR WHOLE WITHOUT THE WRITTEN PERMISSION OF ANDERSON POWER PRODUCTS IS PROHIBITED.

Copyright 2009

ANDERSON POWER PRODUCTS RESERVES THE RIGHT TO ALTER PRODUCT TYPES, THEIR TECHNICAL DATA, DIMENSION, STYLE AND ACCESSORIES WITHOUT PRIOR NOTIFICATION.



COLOR	P/N	MAT'L	TEXT
GRAY	992	PC	CSA
	P992	PC/PBT	"P"
RED	992G1	PC	CSA
	P992G1	PC/PBT	"P"
BLACK	992G2	PC	CSA
	P992G2	PC/PBT	"P"
BLUE	992G4	PC	CSA
	P992G4	PC/PBT	"P"
YELLOW	992G5	PC	CSA
	P992G5	PC/PBT	"P"
GREEN	992G6	PC	CSA
	P992G6	PC/PBT	"P"
ORANGE	992G7	PC	CSA
	P992G7	PC/PBT	"P"



MATED PAIR

NOTES:

1. SPRING/HOUSING ASSEMBLIES ARE UL RECOGNIZED PER FILE E26226, CSA CERTIFIED PER LR25154
2. HOUSINGS ARE KEYED TO ONLY ALLOW MATING WITH THE SAME COLOR HOUSING, EXCEPT FOR THE BLACK HOUSING, WHICH MATES WITH THE GRAY HOUSING AND OTHER CUSTOMER SPECIFIC CONNECTORS.
3. FOR ASSEMBLY INSTRUCTIONS, SEE DOCUMENT 1S1030A
4. HOUSING ASSEMBLIES ACCOMODATE ANDERSON CONTACTS FOR WIRE RANGES #16 AWG TO #6 AWG.

REV.	DESCRIPTION	APPRV	DATE
6	ECRN-15855	TWE	9/4/2015
5	ECRN-14934 COLOR & KEYING ADDED	TWE	7/5/11
4	ECRN 14661: "PC/PBT" WAS "PBT"	CMS	7/7/10
3	ECRN 14391: REDRAW, UPDATE BORDER, ADD TABLE	AMS	2/27/09
REVISIONS			

DIMENSIONS ARE IN:	INCH [MM]	APPROVALS	
UNLESS OTHERWISE STATED		DRAWN	CMS 3/18/1999
TOLERANCES:		CHECKED	DJD 3/19/1999
DECIMALS (INCH)	DECIMALS (MM)	ANGLES	
.XX ± .02	.X ± .5	±2°	
SURFACE FINISH:		MFG APPRV	CHB 4/20/1999
MACHINED	128µin [3.2µ]	QC APPRV	DJM 4/20/1999
MOLDED	64µin [1.6µ]	ENG APPRV	UFN 4/19/1999
MATERIAL: SPRINGS-STAINLESS STEEL HOUSINGS-SEE TABLE			
FINISH:			
		-CAD GENERATED DRAWING- DO NOT MANUALLY UPDATE DO NOT SCALE	

ANDERSON POWER PRODUCTS

TITLE

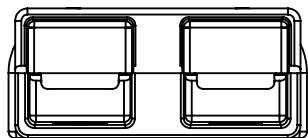
50A DUAL POLE SPRING AND HOUSING

SIZE	DWG NO.	REV.
A	111923S1	6
SCALE	CADFILE	SHEET
NONE	01000	1 OF 2

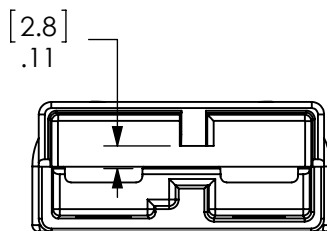
THE INFORMATION CONTAINED IN THIS DRAWING IS THE SOLE PROPERTY OF ANDERSON POWER PRODUCTS. ANY REPRODUCTION IN PART OR WHOLE WITHOUT THE WRITTEN PERMISSION OF ANDERSON POWER PRODUCTS IS PROHIBITED.

Copyright 2009

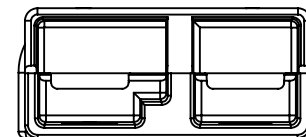
ANDERSON POWER PRODUCTS RESERVES THE RIGHT TO ALTER PRODUCT TYPES, THEIR TECHNICAL DATA, DIMENSION, STYLE AND ACCESSORIES WITHOUT PRIOR NOTIFICATION.



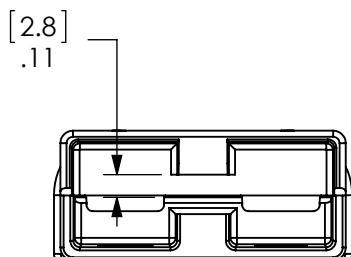
GRAY, BLACK AND NATURAL VOLTAGE KEYING



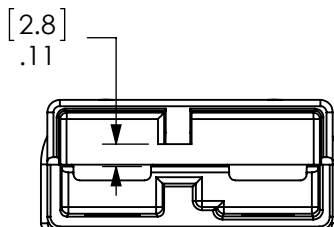
BLUE & WHITE VOLTAGE KEYING



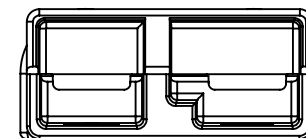
ORANGE VOLTAGE KEYING



RED VOLTAGE KEYING



YELLOW VOLTAGE KEYING



GREEN VOLTAGE KEYING

DIMENSIONS ARE IN: INCH [MM]		APPROVALS		<p>ANDERSON POWER PRODUCTS</p> <p>TITLE</p> <p>50A DUAL POLE SPRING AND HOUSING</p>
UNLESS OTHERWISE STATED		DRAWN	CMS 3/18/1999	
TOLERANCES:		CHECKED	DJD 3/19/1999	
DECIMALS (INCH)	DECIMALS (MM)	ANGLES		
.XX ± .02	.X ± .5	±2°		
SURFACE FINISH:		MFG APPRV	CHB 4/20/1999	
MACHINED 128µin [3.2µ]		QC APPRV	DJM 4/20/1999	
MOLDED 64µin [1.6µ]		ENG APPRV	UFN 4/19/1999	
MATERIAL: SPRINGS-STAINLESS STEEL		SIZE	A	DWG NO. 111923S1
HOUSINGS-SEE TABLE		SCALE	NONE	CADFILE 01000
FINISH:				REV. 6
		-CAD GENERATED DRAWING- DO NOT MANUALLY UPDATE DO NOT SCALE		SHEET 2 OF 2

-	See Sheet1	-	-
REV.	DESCRIPTION	APPRV	DATE
REVISIONS			