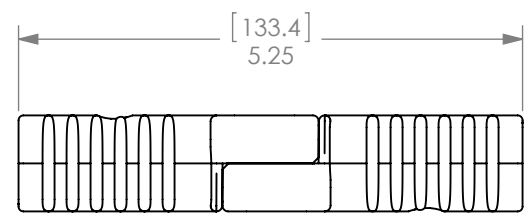
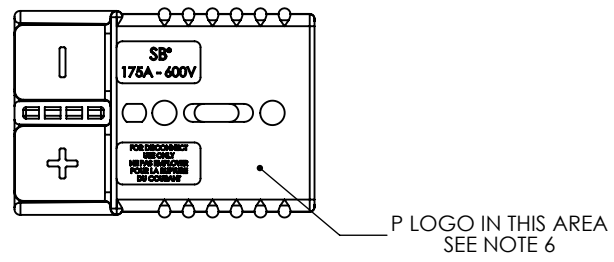
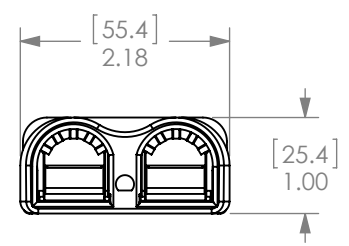
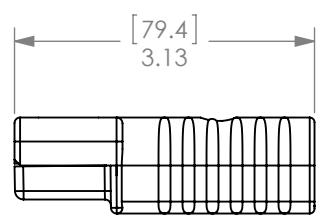
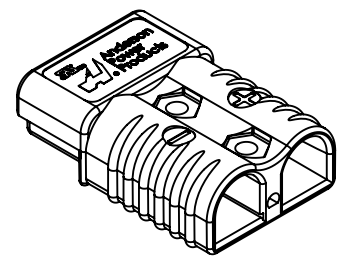
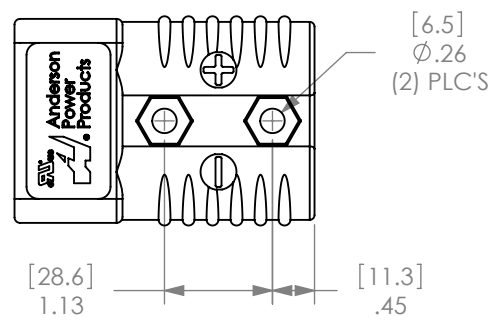


THE INFORMATION CONTAINED IN THIS DRAWING IS THE SOLE PROPERTY OF ANDERSON POWER PRODUCTS. ANY REPRODUCTION IN PART OR WHOLE WITHOUT THE WRITTEN PERMISSION OF ANDERSON POWER PRODUCTS IS PROHIBITED.

Copyright 2009

ANDERSON POWER PRODUCTS RESERVES THE RIGHT TO ALTER PRODUCT TYPES, THEIR TECHNICAL DATA, DIMENSION, STYLE AND ACCESSORIES WITHOUT PRIOR NOTIFICATION.



MATED PAIR

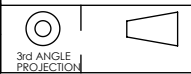
COLOR	P/N SEE NOTE 6	MATERIAL
GRAY	940	PC
	P940	PC/PBT
BLUE	941	PC
	P941	PC/PBT
ORANGE	942	PC
	P942	PC/PBT
YELLOW	943	PC
	P943	PC/PBT
RED	949	PC
	P949	PC/PBT
**BLACK "KEYLESS"	2-7252G11	PC
	P2-7252G11	PC/PBT
BROWN	950	PC
	P950	PC/PBT

- NOTES:
1. SPRING/HOUSING ASSEMBLIES ARE UL RECOGNIZED PER FILE E26226, CSA CERTIFIED PER LR25154
 2. HOUSINGS ARE KEYED TO ONLY ALLOW MATING WITH THE SAME COLOR HOUSING.
 3. FOR ASSEMBLY INSTRUCTIONS SEE DOCUMENT 1S1030A
 4. HOUSING ASSEMBLIES ACCOMMODATE ANDERSON CONTACTS FOR WIRE RANGE FROM #10 AWG TO 1/0.
 5. **BLACK "KEYLESS" CONNECTOR WILL MATE WITH ALL VOLTAGE KEYS AND COLORS
 6. "P" PREFIX AND LOGO INDICATE CHEMICAL RESISTANT HOUSINGS. "P" LOGO PRESENT ON CHEMICAL RESISTANT HOUSINGS ONLY.

REV.	DESCRIPTION	APPRV	DATE
5	ECRN-15512 UPDATE DRAWING	TWE	11/14/2013
4	ECRN 15246 ADDED NOTE 6	NTS	10/1/2012
3	ECRN 14661: "PC/PBT" WAS "PBT"	CMS	7/7/10
2	ECRN 14391- REDRAW UPDATE BORDER ADD TABLE	AMS	3/3/09

REVISIONS

DIMENSIONS ARE IN:	INCH [MM]	APPROVALS		 ANDERSON POWER PRODUCTS			
UNLESS OTHERWISE STATED		DRAWN	CMS 3/18/1999				
TOLERANCES:		CHECKED	DJD 3/19/1999				
DECIMALS (INCH) .XX ±.02		MFG APPRV	CHB 4/19/1999				
DECIMALS (MM) .X ±.5		QC APPRV	DJM 4/20/1999	TITLE 175A DUAL POLE SPRING & HOUSING			
ANGLES ±2°		ENG APPRV	UFN 4/20/1999				
SURFACE FINISH:		SIZE	A	DWG NO.	114131S1	REV.	5
MACHINED 128µin [3.2µ]		SCALE	NONE	CADFILE	01001	SHEET	1 OF 2
MOLDED 64µin [1.6µ]		-CAD GENERATED DRAWING- DO NOT MANUALLY UPDATE DO NOT SCALE					
MATERIAL: SPRINGS - STAINLESS STEEL HOUSINGS - SEE TABLE							
FINISH:							

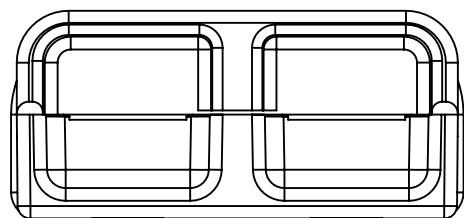


THE INFORMATION CONTAINED IN THIS DRAWING IS THE SOLE PROPERTY OF ANDERSON POWER PRODUCTS. ANY REPRODUCTION IN PART OR WHOLE WITHOUT THE WRITTEN PERMISSION OF ANDERSON POWER PRODUCTS IS PROHIBITED.

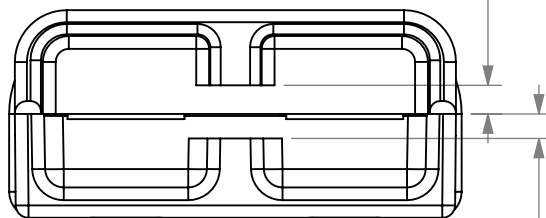
Copyright 2012

ANDERSON POWER PRODUCTS RESERVES THE RIGHT TO ALTER PRODUCT TYPES, THEIR TECHNICAL DATA, DIMENSION, STYLE AND ACCESSORIES WITHOUT PRIOR NOTIFICATION.

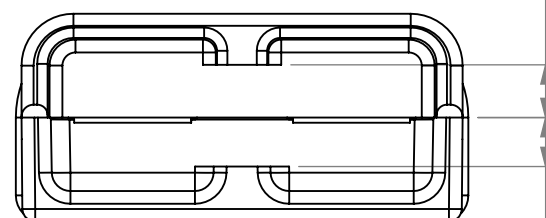
D



GRAY VOLTAGE KEYING

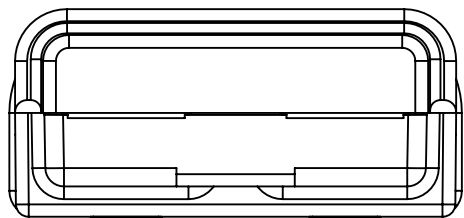


BLUE VOLTAGE KEYING

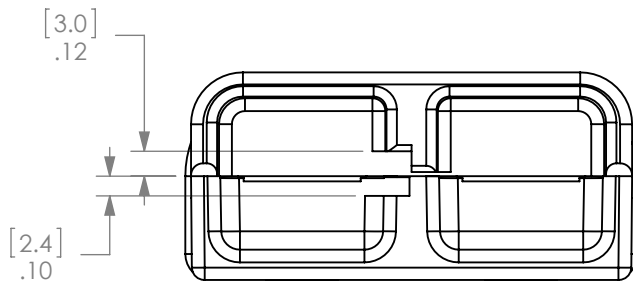


ORANGE VOLTAGE KEYING

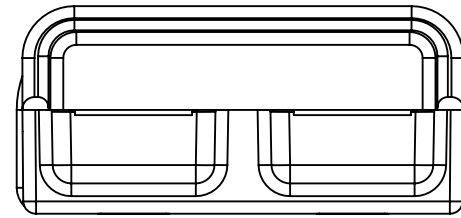
C



YELLOW VOLTAGE KEYING

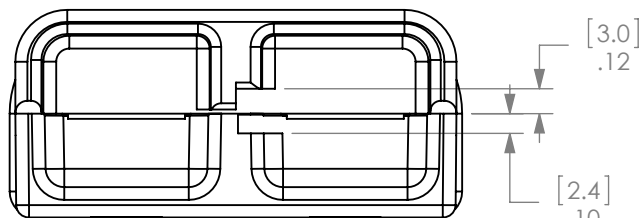


RED VOLTAGE KEYING



BLACK "KEYLESS" VOLTAGE KEYING

B



BROWN VOLTAGE KEYING

A

DIMENSIONS ARE IN:		INCH [MM]		<i>APPROVALS</i>		ANDERSON POWER PRODUCTS	
UNLESS OTHERWISE STATED				DRAWN	CMS	3/18/1999	TITLE
TOLERANCES:				CHECKED	DJD	3/19/1999	
DECIMALS (INCH)	DECIMALS (MM)	ANGLES		MFG APPRV	CHB	4/19/1999	
.XX ± .02	.X ± .5	±2°		QC APPRV	DJM	4/20/1999	
SURFACE FINISH:				ENG APPRV	UFN	4/20/1999	SIZE
MACHINED		128µin [3.2µ]		-CAD GENERATED DRAWING- DO NOT MANUALLY UPDATE DO NOT SCALE		DWG NO.	114131S1
MOLDED		64µin [1.6µ]				SCALE	NONE
MATERIAL: SPRINGS - STAINLESS STEEL HOUSINGS - SEE TABLE						CADFILE	01001
FINISH:						SHEET	2 OF 2
						REV.	5

-	See Sheet1	-	-
REV.	DESCRIPTION	APPRV	DATE

REVISIONS